

# Amplified Middle Pressure Sensors

0.3 psi to 15 psi Pressure Sensors

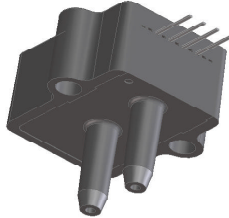
**Industrial Temperature Grade**

## Features

- 0 to 0.3 psi to 0 to 15 psi Pressure Ranges
- Ratiometric 4V Output
- Temperature Compensated (-25C to 85C)
- Calibrated Zero and Span

## Applications

- Medical Instrumentation
- Environmental Controls
- HVAC



2

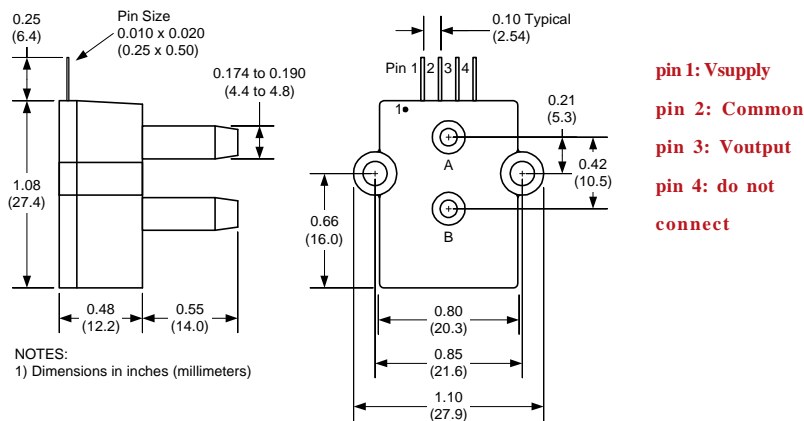
## General Description

The Amplified line of middle pressure sensors is based upon a proprietary package technology to reduce errors. This model provides a ratiometric 4-volt output with superior output characteristics. The sensor housing has been designed specifically to reduce package induced parasitic stress and strain. In addition the sensor utilizes a silicon, micromachined, stress concentration enhanced structure to provide a very linear output to measured pressure.

These calibrated and temperature compensated sensors give an accurate and stable output over a wide temperature range. Each sensor is internally compensated using an ASIC compensation technique. This series is intended for use with non-corrosive, non-ionic working fluids such as air, dry gases and the like.

The output of the device is ratiometric to the supply voltage over a supply voltage range of 4.5 to 5.5 volts.

## Physical Dimensions



## Pressure Sensor Ratings

<b>Supply Voltage VS</b>	+4.5 to +5.5 Vdc
<b>Common-mode pressure</b>	-10 to +10 psig
<b>Lead Temperature, max (soldering 2-4 sec.)</b>	250°C

## Environmental Specifications

<b>Temperature Ranges</b>	
<b>Compensated</b>	-25 to 85° C
<b>Operating</b>	-40 to 125° C
<b>Storage</b>	-40 to 125° C
<b>Humidity Limits</b>	0 to 95% RH (non condensing)

## Standard Pressure Ranges

Part Number	Operating Pressure	Nominal Span	Proof Pressure	Burst Pressure
0.3 PSI-D-4V-PRIME	±0.3 PSI	4V	5 PSI	10 PSI
0.3 PSI-G-4V-PRIME	0 - 0.3 PSI	4V	5 PSI	10 PSI
1 PSI-D-4V-PRIME	±1 PSI	4V	5 PSI	10 PSI
1 PSI-G-4V-PRIME	0 - 1 PSI	4V	5 PSI	10 PSI
5 PSI-D-4V-PRIME	±5 PSI	4V	15 PSI	30 PSI
5 PSI-G-4V-PRIME	0 - 5 PSI	4V	15 PSI	30 PSI
15 PSI-A-4V-PRIME	0 - 15 PSIA	4V	45 PSI	60 PSI
15 PSI-D-4V-PRIME	±15 PSI	4V	45 PSI	60 PSI
15 PSI-G-4V-PRIME	0 - 15 PSIG	4V	45 PSI	60 PSI

## Performance Characteristics for 0.3 PSI-D-4V-PRIME

Parameter, note 1	Minimum	Nominal	Maximum	Units
Operating Range, differential pressure		±0.3		PSI
Output Span, note 5	±1.90	±2.0	±2.10	volt
Offset Voltage @ zero differential pressure	2.15	2.25	2.35	volt
Offset Temperature Shift (-25°C to 85°C), note 2			±40	mvolt
Linearity, hysteresis error, note 4			±0.5	%fs
Span Shift (-25°C to 85°C), note 2			±2	%span

## Performance Characteristics for 0.3 PSI-G-4V-PRIME

Parameter, note 1	Minimum	Nominal	Maximum	Units
Operating Range, gage pressure		0.3		PSI
Output Span, note 5	3.90	4.0	4.10	volt
Offset Voltage @ zero pressure	0.15	0.25	0.35	volt
Offset Temperature Shift (-25°C to 85°C), note 2			±40	mvolt
Linearity, hysteresis error, note 4			±0.5	%fs
Span Shift (-25°C to 85°C), note 2			±2	%span

**Performance Characteristics for 1 PSI-D-4V-PRIME**

Parameter, note 1	Minimum	Nominal	Maximum	Units
Operating Range, differential pressure		±1.0		PSI
Output Span, note 5	±1.90	±2.0	±2.10	volt
Offset Voltage @ zero differential pressure	2.15	2.25	2.35	volt
Offset Temperature Shift (-25°C to 85°C), note 2			±40	mvolt
Linearity, hysteresis error, note 4			±0.5	% fs
Span Shift (-25°C to 85°C), note 2			±1	% span

**Performance Characteristics for: 1 PSI-G-4V-PRIME**

Parameter, NOTE 1	Minimum	Nominal	Maximum	Units
Operating Range, gage pressure		1.0		PSI
Output Span, NOTE 5	3.90	4.0	4.10	volt
Offset Voltage @ zero pressure	0.15	0.25	0.35	volt
Offset Temperature Shift (-25°C to 85°C), note 2			±40	mvolt
Linearity, hysteresis error, note 4			±0.5	% fs
Span Shift (-25°C to 85°C), note 2			±1	% span

**Performance Characteristics for: 5 PSI-D-4V-PRIME**

Parameter, NOTE 1	Minimum	Nominal	Maximum	Units
Operating Range, differential pressure		±5.0		PSI
Output Span, NOTE 5	±1.90	±2.0	±2.10	volt
Offset Voltage @ zero differential pressure	2.15	2.25	2.35	volt
Offset Temperature Shift (-25°C to 85°C), note 2			±20	mvolt
Linearity, hysteresis error, note 4			±0.5	% fs
Span Shift (-25°C to 85°C), note 2			±1	% span

**Performance Characteristics for: 5 PSI-G-4V-PRIME**

Parameter, NOTE 1	Minimum	Nominal	Maximum	Units
Operating Range, gage pressure		5.0		PSI
Output Span, NOTE 5	3.90	4.0	4.10	volt
Offset Voltage @ zero pressure	0.15	0.25	0.35	volt
Offset Temperature Shift (-25°C to 85°C), note 2			±20	mvolt
Linearity, hysteresis error, note 4			±0.5	% fs
Span Shift (-25°C to 85°C), note 2			±1	% span

### Performance Characteristics for 15 PSI-A-4V-PRIME

Parameter, note 1	Minimum	Nominal	Maximum	Units
Operating Range, absolute pressure		15.0		PSI
Output Span, note 5	3.90	4.0	4.10	volt
Offset Voltage @ zero pressure	0.15	0.25	0.35	volt
Offset Temperature Shift (-25°C to 85°C), note 2			±20	mvolt
Linearity, hysteresis error, note 4			±0.5	%fs
Span Shift (-25°C to 85°C), note 2			±1	%span

### Performance Characteristics for 15 PSI-D-4V-PRIME

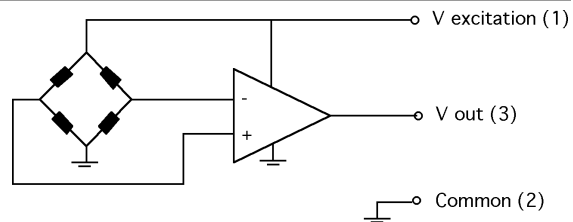
Parameter, note 1	Minimum	Nominal	Maximum	Units
Operating Range, differential pressure		±15.0		PSI
Output Span, note 5	±1.90	±2.0	±2.10	volt
Offset Voltage @ zero differential pressure	2.15	2.25	2.35	volt
Offset Temperature Shift (-25°C to 85°C), note 2			±20	mvolt
Linearity, hysteresis error, note 4			±0.5	%fs
Span Shift (-25°C to 85°C), note 2			±1	%span

### Performance Characteristics for 15 PSI-G-4V-PRIME

Parameter, note 1	Minimum	Nominal	Maximum	Units
Operating Range, gage pressure		15.0		PSI
Output Span, note 5	3.90	4.0	4.10	volt
Offset Voltage @ zero pressure	0.15	0.25	0.35	volt
Offset Temperature Shift (-25°C to 85°C), note 2			±20	mvolt
Linearity, hysteresis error, note 4			±0.5	%fs
Span Shift (-25°C to 85°C), note 2			±1	%span

### Equivalent Circuit

**Pressure Response: for any pressure applied the response time to get to 90% of pressure applied is typically less than 500 useconds.**



### Specification Notes

NOTE 1: ALL PARAMETERS ARE MEASURED AT 5.0 VOLT EXCITATION, FOR THE NOMINAL FULL SCALE PRESSURE AND ROOM TEMPERATURE UNLESS OTHERWISE SPECIFIED. PRESSURE MEASUREMENTS ARE WITH POSITIVE PRESSURE APPLIED TO PORT B.

NOTE 2: SHIFT IS RELATIVE TO 25°C.

NOTE 3: SHIFT IS WITHIN THE FIRST HOUR OF EXCITATION APPLIED TO THE DEVICE.

NOTE 4: MEASURED AT ONE-HALF FULL SCALE RATED PRESSURE USING BEST STRAIGHT LINE CURVE FIT.

NOTE 5: THE VOLTAGE ADDED TO THE OFFSET VOLTAGE AT FULL SCALE PRESSURE. NOMINALLY THE OUTPUT VOLTAGE RANGE IS 0.25 TO 4.25 VOLTS FOR MINUS TO PLUS FULL SCALE PRESSURE.

All Sensors reserves the right to make changes to any products herein. All Sensors does not assume any liability arising out of the application or use of any product or circuit described herein, neither does it convey any license under its patent rights nor the rights of others.